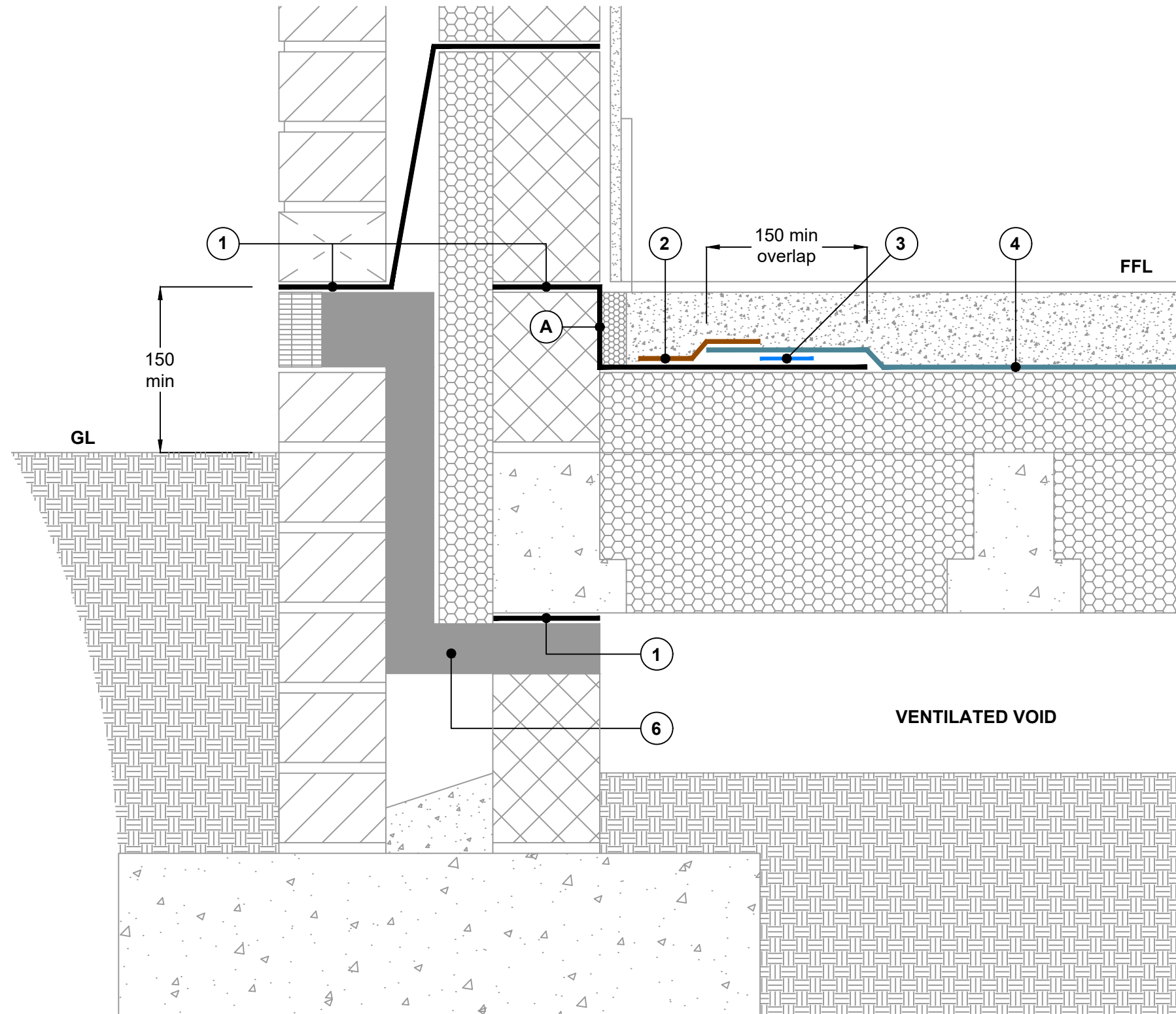
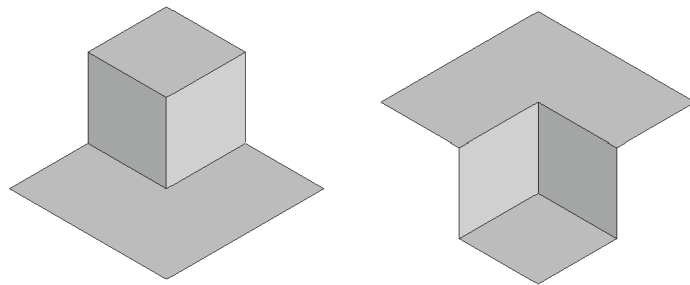


Key to materials:

1	Visqueen Zedex CPT High Performance Damp Proof Course
2	VisqueenPro Single Sided Tape
3	VisqueenPro Double Sided Jointing Tape
4	Visqueen High Performance Damp Proof Membrane
A	PFU-553 Preformed Units at corners



Section View

CRITICAL GUIDANCE NOTES

Visqueen Guidance Details are for illustration purposes only. It is the lead designer's responsibility to ensure Guidance Details are incorporated correctly into construction drawings.

Visqueen take no project design liability, or responsibility for the use of Guidance Details. Visqueen have no control over the situation in which the products are installed. Visqueen provide a Contract Design Service where project specific drawings can be produced. Contact Visqueen Technical Services for further information.

Site construction sequencing should be assessed before the appropriate Guidance Detail is selected and approved by the lead designer.

All Visqueen materials must be installed in strict accordance with the Visqueen Product Datasheets and applicable third party certificates.

DPCs and DPC cavity trays to be installed in accordance with BS 8215:1991, PD 6697:2019 and BS 8000-3:2020.

Ventilated air space depth and venting unit quantity as per national building regulations or specification requirements.

The DPM system shown can be installed with welded lap joints. Contact Visqueen Technical Services for further information.

Visqueen Preformed Units are available to assist detailing at internal and external corners. See A on key to materials.

Drawing not to scale, use figured dimensions only. All figured dimensions are in millimetres.

Guidance Detail

Date: January 2024

Drawing No: HP DPM-75

Revision: A | Drawn by: JR

Approved by: SD


 Tel: 0333 202 6800
 enquiries@visqueen.com
 www.visqueen.com

© Copyright reserved. This drawing may not be reproduced or amended without prior written permission.



DPM ABOVE SLAB & INSULATION, INSULATED FLOORING SYSTEM & EXTERNAL MASONRY CAVITY WALL AT TELESCOPIC VENT LOCATION